



touchREVIEWS in RMD

VOLUME 2 • ISSUE 1 • 2023

EDITOR-IN-CHIEF: PETER TAYLOR

Strategies to Improve Adherence in Patients with Rheumatoid Arthritis

Margaret Man-Ger Sun and Janet E Pope

The Adaption and Validation Processes in Remission Criteria for Rheumatoid Arthritis

Paul Studenic

Managing Inflammatory Bowel Disease in Spondyloarthritis

Olivier Fakih

Bimekizumab, a Humanized Monoclonal Immunoglobulin G1 Antibody for the Treatment of Psoriatic Arthritis: A Systematic Review

Ippei Miyagawa and Yoshiya Tanaka

www.touchIMMUNOLOGY.com

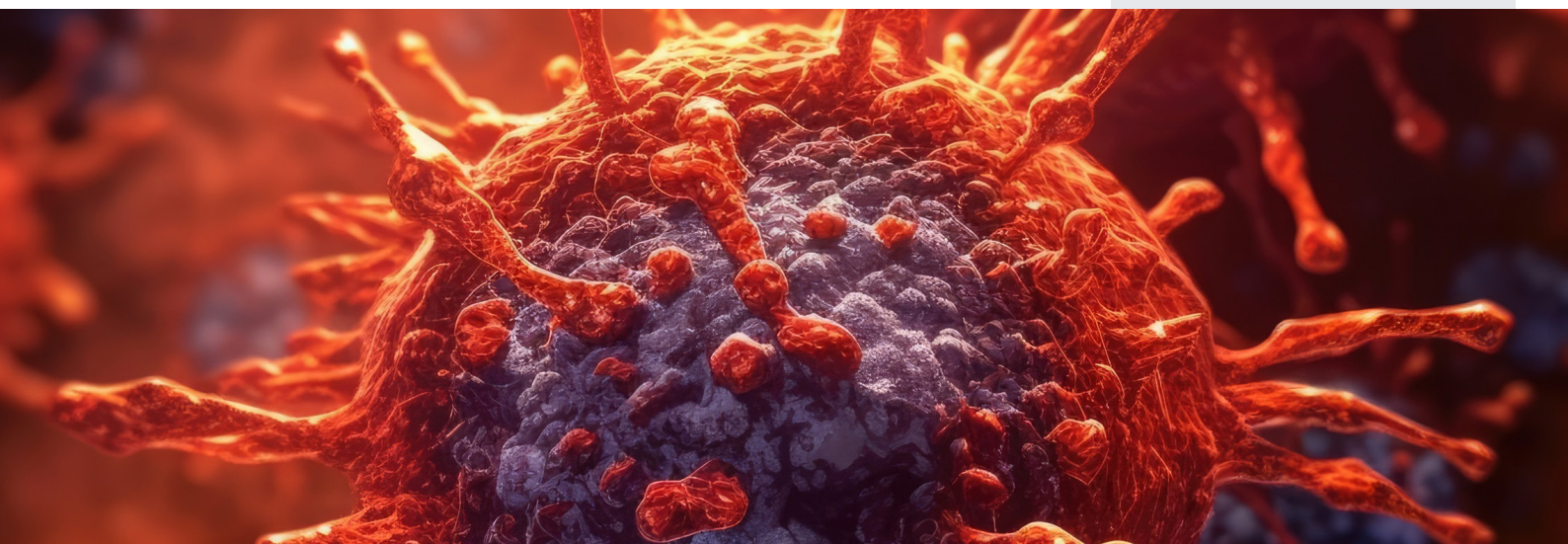
touchREVIEWS

in RMD

Volume 2 • Issue 1 • 2023

touchREVIEWS in RMD is an international, peer-reviewed, free-to-access journal developed for touchIMMUNOLOGY.com

Cover image: Human immune cells powered by AI. (Generative AI) | by HandmadePictures © adobestock.com



touchIMMUNOLOGY.com wishes to thank the organisations below for their assistance. This does not constitute any official endorsement.



NORD®



All information obtained by Touch Medical Media and each of the contributors from various sources is as current and accurate as possible. However, due to human or mechanical errors, Touch Medical Media and the contributors cannot guarantee the accuracy, adequacy or completeness of any information, and cannot be held responsible for any errors or omissions, or for the results obtained from the use thereof. Where opinion is expressed, it is that of the authors and does not necessarily coincide with the editorial views of Touch Medical Media. Statistical and financial data in this publication have been compiled on the basis of factual information and do not constitute any investment advertisement or investment advice. For the avoidance of doubt, the information contained in this publication is intended for use by licensed medical professionals. The content should not be considered medical advice, diagnosis or treatment recommendations.

© 2023 Touch Medical Media Group Holdings Ltd is a private limited company registered in England and Wales at Lancashire Gate, 21 Tiviot Dale, Stockport, Cheshire, SK1 1TD, UK, with registered number 08197142. All rights reserved. eISSN 2635-1420

Senior Editorial Director
Gina Furnival

Editorial Directors
Katey Gabrysch
Sophie Nickelson

Commissioning Editors
Victoria Jones
Shanice Allen

Editorial Workflow
Lisa Glass
Heather Hall
Marianna Mignani
Atiya Henry
Danielle Crosby

Group Head Medical & Editorial
Nicola Cartridge
E: nicola.cartridge@touchmedicalmedia.com
T: +44 (0)20 7193 3186

CEO & Managing Director
Barney Kent
E: barney.kent@touchmedicalmedia.com
T: +44 (0)20 7193 3009

Head of Strategic Partnerships
Caroline Markham
E: caroline.markham@touchmedicalmedia.com
T: +44 (0)20 7193 3704



www.touchmedicalmedia.com

touchREVIEWS

in RMD

Editor-in-Chief

Peter C Taylor
University of Oxford, Oxford, UK

Editorial Board

Alessia Alunno
The University of L'Aquila, L'Aquila, Italy

Jérôme Avouac
Université de Paris, Hôpital Cochin, Service de Rhumatologie, Paris, France

Lisa A Christ
Department of Rheumatology and Immunology Inselspital, Bern University Hospital, University of Bern, Switzerland

Raj Chovatiya
Northwestern University Feinberg School of Medicine, Chicago, IL, USA

Alessio Corellini
Fondazione Policlinico Universitario Campus Bio-Medico, Rome, Italy

Eva Monoz Couselo
Vall d'Hebron Hospital, Barcelona, Spain

Maria-Antonietta D'Agostino
Versailles-Saint-Quentin University and University Hospital Ambroise Paré, Boulogne-Billancourt, France

William Damsky
Yale School of Medicine, New Haven, CT, USA

Debashish Danda
Christian Medical College & Hospital, Vellore, India

Patrick Durez
Department of Rheumatology, UCL Cliniques Universitaires Saint-Luc, Brussels, Belgium

Luis FC Ensina
Division of Allergy, Immunology and Rheumatology, Department of Pediatrics, Federal University of São Paulo, Brazil

Rebecca Fischer-Betz
Heinrich-Heine University, Düsseldorf, Germany

Nicholas Fuggle
MRC Lifecourse Epidemiology Centre, Southampton, UK

Richard Furie
Division of Rheumatology, Northwell Health and Zucker School of Medicine at Hofstra/Northwell, Hempstead, NY, USA

Christopher Griffiths
Dermatology Centre, Barnes Building, Salford Royal NHS Foundation Trust, Manchester, UK

Kevan Herold
Yale School of Medicine, New Haven, CT, USA

Sarosh Irani
Oxford Autoimmune Neurology Group, Nuffield Department of Clinical Neurosciences, University of Oxford, Oxford, UK

Arthur Kavanaugh
Center for Innovative Therapy, University of California, San Diego, CA, USA

Emek Kocaturk
Koç University School of Medicine, Istanbul, Turkey

Petar Lenert
The University of Iowa, Iowa City, IA, USA

Su Lwin
Genetic Skin Disease Group, St John's Institute of Dermatology, King's College London, London, UK

Marcus Maurer
Department of Dermatology and Allergy and Allergie-Centrum-Charité, Charité – Universitätsmedizin Berlin, Berlin, Germany

David A McLain
McLain Medical Associates, Birmingham, AL, USA

Gil Y Melmed
Center for Inflammatory Bowel Diseases, Cedars-Sinai Medical Center, Los Angeles, CA, USA

Elena Myasoedova
Division of Rheumatology, Mayo Clinic, Rochester, MN, USA

Elena Nikiphorou
Centre for Rheumatic Diseases, School of Immunology and Microbial Sciences, King's College London, London, UK

Maria Oliva-Hemker
Johns Hopkins University School of Medicine, Baltimore, MD, USA

Michael Pillinger
NYU Grossman School of Medicine, New York, NY, USA

Adam Reich
University of Rzeszow, Rzeszów, Poland

Raj Sengupta
The Royal National Hospital for Rheumatic Diseases, Bath, UK

Tiago Torres
Centro Hospitalar, Universitário do Porto, Porto, Portugal

touchREVIEWS

in RMD

Established: January 2021 Frequency: Bi-annual
Current edition: Volume 2 Issue 1, 2023

Aims and scope

- *touchREVIEWS in RMD* enables time-pressured physicians to stay abreast of major advances and opinion in international rheumatology practice.
- *touchREVIEWS in RMD* comprises balanced and comprehensive articles, addressing the most important and salient developments in the field of rheumatology.
- *touchREVIEWS in RMD* endeavours to support physicians, clinicians and related healthcare professionals in continuously developing their knowledge, effectiveness and productivity. The editorial policy has been designed to encourage discussion among this peer group.
- Comprehensive bibliographies for each article mean that *touchREVIEWS in RMD* is an informative and valuable reference tool for use throughout the year.
- All articles are subject to peer review, and must adhere to the ICMJE, GPP 2022 and COPE guidelines.

Structure and format

- *touchREVIEWS in RMD* is a peer-reviewed, free-to-access, bi-annual journal comprising review articles, original research, case reports, editorials, expert interviews and practice pearls.
- The structure of each edition of the publication comprises section categories determined by the Editor. The degree of coverage assigned to each category is the decision of the Managing Editor, and in part reflects the views of the Editorial Board.
- All articles disclose any author financial and non-financial relationships and activities, along with any funding, financial support and medical writing assistance.
- Each edition of *touchREVIEWS in RMD* is published in full online at www.touchIMMUNOLOGY.com

Editorial expertise

touchREVIEWS in RMD is supported by various levels of expertise:

- Guidance from an Editorial Board consisting of leading authorities from a variety of disciplines in immunology.
- Invited contributors who are recognized authorities from their respective fields.
- Peer review: conducted by experts appointed for their experience and knowledge of a specific topic.
- An experienced team of Editors and Technical Editors.

Peer review

- On submission, all articles are assessed by the Editor to determine their suitability for inclusion and appropriateness for peer review.
- The Editor identifies at least two appropriate reviewers, who are selected on the basis of their specialist knowledge in the relevant area, following consultation with a member of the Editorial Board where necessary.
- We aim to have the final peer review decision within 4 weeks.
- Following review, papers are either accepted without modification, returned to the author(s) to incorporate required changes or not accepted for publication.

- The Editor reserves the right to accept or reject any proposed amendments on the advice of the Editorial Board and reviewers.

Submissions and instructions for authors

- The Editor commissions articles with guidance from the Editorial Board, and unsolicited articles are welcomed.
- The Editor is always keen to hear from authors wishing to discuss potential submissions and will give due consideration to any proposals. Please contact the Editor for further details: editorialmanager@touchmedicalmedia.com.
- Instructions for authors are available from the website: www.touchIMMUNOLOGY.com

Distribution and readership

touchREVIEWS in RMD is distributed globally, on a bi-annual basis, through controlled circulation to healthcare and pharmaceutical professionals in the field internationally.

Copyright

Authors transfer copyright of their article to Touch Medical Media, who publish the article as free-to-access to registered users.

Free-to-access

All articles are free-to-access, which allows anyone in the rheumatology field to download published articles free of charge.

Online


www.touchmedicalmedia.com provides clinicians and other industry professionals with free resources spanning nine therapy areas including cardiology, endocrinology, haematology, immunology, infectious diseases, neurology, oncology, ophthalmology and respiratory and pulmonary diseases.

Society partners

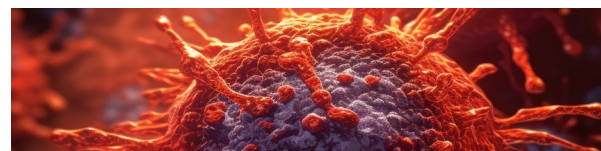
touchIMMUNOLOGY.com has developed very valuable society partnerships with the most respected not-for-profit medical societies internationally.

These partnerships are key as touchIMMUNOLOGY.com helps to promote awareness of these medical societies while also providing free-to-access, peer-reviewed articles and multimedia content to the society members, which ensures that the community is kept up-to-date with the latest cutting-edge content and opinion from world-renowned doctors.

About Touch Medical Media

Touch Medical Media publishes a rich and diverse portfolio of free-to-access, peer-reviewed journals across the clinical and pharmaceutical arenas. Touch Medical Media aims to assist in the education and practice of healthcare and pharmaceutical professionals. 





Foreword

1 Foreword

Peter C Taylor – Editor-in-Chief

University of Oxford, Oxford, UK

Practice Pearl

Rheumatoid Arthritis

2 Strategies to Improve Adherence in Patients with Rheumatoid Arthritis

Margaret Man-Ger Sun^{1,2} and Janet E Pope^{1,2,3}

1. Schulich School of Medicine & Dentistry, London, ON, Canada; 2. Western University, London, ON, Canada; 3. Department of Medicine, Division of Rheumatology, St Joseph's Health Care, London, ON, Canada

Editorial

Rheumatoid Arthritis

4 The Adaption and Validation Processes in Remission Criteria for Rheumatoid Arthritis

Paul Studenic^{1,2}

1. Division of Rheumatology, Department of Medicine (Solna), Karolinska Institutet, Stockholm, Sweden; 2. Division of Rheumatology, Department of Internal Medicine 3, Medical University of Vienna, Vienna, Austria

Reviews

Axial Spondyloarthritis

7 Managing Inflammatory Bowel Disease in Spondyloarthritis

Olivier Fakh

Service de Rhumatologie, CHU de Besançon, Besançon, France

Psoriatic Arthritis

11 Bimekizumab, a Humanized Monoclonal Immunoglobulin G1 Antibody for the Treatment of Psoriatic Arthritis: A Systematic Review

Ippei Miyagawa^{1,2,3} and Yoshiya Tanaka¹

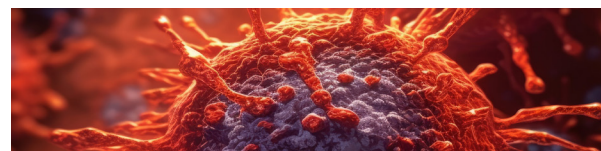
1. The First Department of Internal Medicine, University of Occupational and Environmental Health, Japan, Kitakyushu, Japan; 2. Department of Internal Medicine 3, Rheumatology and Immunology, Friedrich-Alexander-University Erlangen-Nürnberg (FAU) and Universitätsklinikum Erlangen, Erlangen, Germany; 3. Deutsches Zentrum für Immuntherapie (DZI), Friedrich-Alexander-University (FAU) and Universitätsklinikum Erlangen, Erlangen, Germany

Rheumatoid Arthritis

17 Interleukin 6 Inhibition in Rheumatoid Arthritis: Highlight on Olokizumab

Eugen Feist¹ and Evgeny Nasonov^{2,3}

1. Helios Department for Rheumatology and Clinical Immunology, Vogelsang-Gommern, Germany; 2. V. A. Nasonova Research Institute of Rheumatology, Moscow, Russia; 3. Department of Rheumatology, Institute for Professional Education, I. M. Sechenov First Moscow State Medical University, Ministry of Health of Russia, Moscow, Russia



Rheumatic Diseases

28 **Challenges in Family Planning and Pregnancy for Women with Rheumatic Diseases**

Caroline H Siegel^{1,2} and Lisa R Sammaritano^{1,2}

1. Division of Rheumatology; Hospital for Special Surgery, New York, NY, USA; 2. Department of Medicine, Weill Cornell Medicine, New York, NY, USA

37 **The Effect of Air Pollution on Rheumatic Diseases: A Review**

Giovanni Adami

Rheumatology Unit, University of Verona, Verona, Italy

42 **Health Equity in Rheumatology: A Global Health Perspective**

Nimrat K Sandhu,¹ Grace Wright,² Kristina Fajardo² and Latika Gupta^{3,4,5}

1. Department of Public Health, The University of California Merced, California, USA; 2. Association of Women in Rheumatology, New York, NY, USA; 3. Division of Musculoskeletal and Dermatological Sciences, Centre for Musculoskeletal Research, School of Biological Sciences, The University of Manchester, Manchester, UK; 4. City Hospital, Sandwell and West Birmingham Hospitals NHS Trust, Birmingham, UK; 5. Department of Rheumatology, Royal Wolverhampton Hospital NHS Trust, Wolverhampton, UK

46 **An Update on Biosimilars in Rheumatic and Musculoskeletal Disorders**

Mariam Malik and Christopher Holroyd

University Hospital Southampton, Southampton, UK