



The Evolving Understanding of Prurigo Nodularis (PN) Has Implications for Patient Management

PN is a heterogenous, chronic inflammatory, pruritic disease with unique and varied patient characteristics, burden and clinical manifestations¹⁻⁶

PN patients may differ in their:¹⁻³



Disease Etiology
e.g., primary, idiopathic, neurological



Treatment History
e.g., topicals, gabapentinoids



Lesion Size and Number
A few mm to 2–3 cm, numbers can vary from a few to hundreds



Comorbidities
e.g., atopic, liver and kidney diseases

Varied clinical manifestations in PN include:⁴⁻⁶



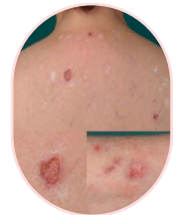
Papular



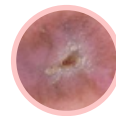
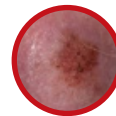
Nodular



Plaque

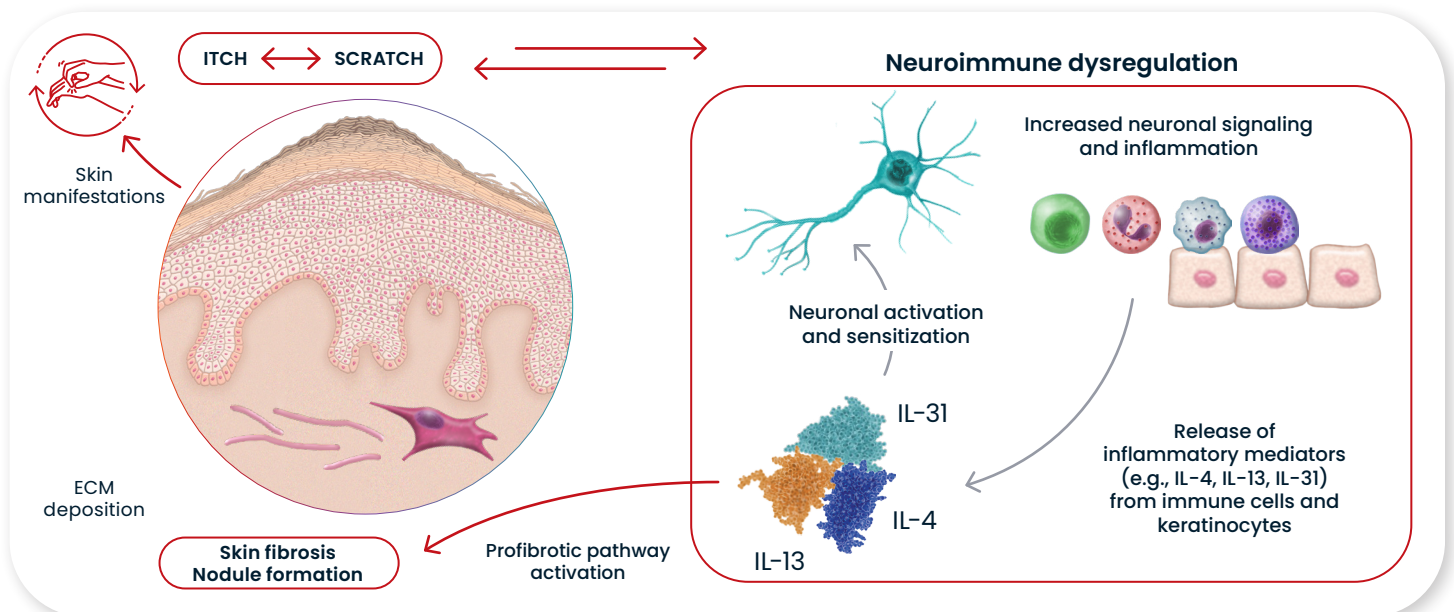


Ulcerative



Nodular is the most common manifestation, but any skin type can present with any variation

Continuous scratching in PN leads to **neuroimmune dysregulation** and **type 2 inflammation**, resulting in increased neuronal signaling, further pruritus, skin fibrosis and nodule formation⁷⁻⁹



Emerging targeted therapies for PN have been shown to alleviate patient burden by reducing itch and nodules, and by improving sleep and quality of life^{10,11}

ECM, extracellular matrix; IL, interleukin; PN, prurigo nodularis.

1. Huang AH, et al. *J Invest Dermatol.* 2020;140:480–483.e4. 2. Pereira MP, et al. *J Eur Acad Dermatol Venereol.* 2020;34(10):2373–2383. 3. Zeidler C, et al. *Acta Derm Venereol.* 2018;98(2):173–179. 4. Kwon C, et al. *Medicines (Basel).* 2019;6(4):97. 5. Schedel F, et al. *Hautarzt.* 2014;65:684–690. 6. Zeidler C, et al. *Front Med (Lausanne).* 2021;29:8:649332. 7. Garcovich S, et al. *Vaccines (Basel).* 2021;9:30. 8. Nguyen JK, et al. *Arch Dermatologic Res.* 2020;312(2):81–92. 9. Weigelt N, et al. *J Cutan Pathol.* 2010;37:578–586. 10. Kwatra G, et al. Presentation at AAD 2023 New Orleans, LA, USA, 17–21 March 2023. Abstract #45996. 11. Yosipovitch G, et al. *Nat Med.* 2023;29(5):1180–1190.



ADVENT is a breakthrough educational program bringing together different specialties treating patients with type 2 inflammatory diseases.

Prof. Thomas Bieber, Dermatologist, Germany



What is the ADVENT program?

ADVENT is a global medical education program that shares the latest evidence on diseases with underlying type 2 inflammation

Areas covered include:

DERMATOLOGY

Atopic dermatitis
Prurigo nodularis
Chronic spontaneous urticaria

RESPIRATORY

Asthma
Chronic rhinosinusitis
with nasal polyps

GASTROENTEROLOGY

Eosinophilic esophagitis

Goals of the platform



Improve
patient care



Facilitate
cross-specialty
knowledge sharing



Explore multidisciplinary
implications of underlying
type 2 inflammation



Reduce the burden of
diseases driven by underlying
type 2 inflammation

What does ADVENT have to offer?

ADVENT materials
were developed with:



More than 120 experts
from more than 15 countries



Specialists in **allergy, dermatology,**
gastroenterology, otolaryngology
and **respiratory medicine**

The ADVENT program provides:



On-demand
events



Expert
presentations



Self-guided
educational
resources



Expert
interviews



Infographics



Activities adapted
for local needs
and languages



STAY IN THE KNOW ABOUT THE EVOLVING SCIENCE OF TYPE 2 INFLAMMATION
For more information visit ADVENTprogram.com